

# NEW SINUS PHYSIOLIFT® II SINUS LIFT BY CRESTAL APPROACH – NOW FOR A WIDER RANGE OF PATIENTS

mectron s.p.a., via Loreto 15/A, 16042 Carasco (Ge), Italia, tel +39 0185 35361, fax +39 0185 351374, www.mectron.com, mectron@mectron.com

## SINUS PHYSIOLIFT®



new



### NEW ELEVATOR CS2

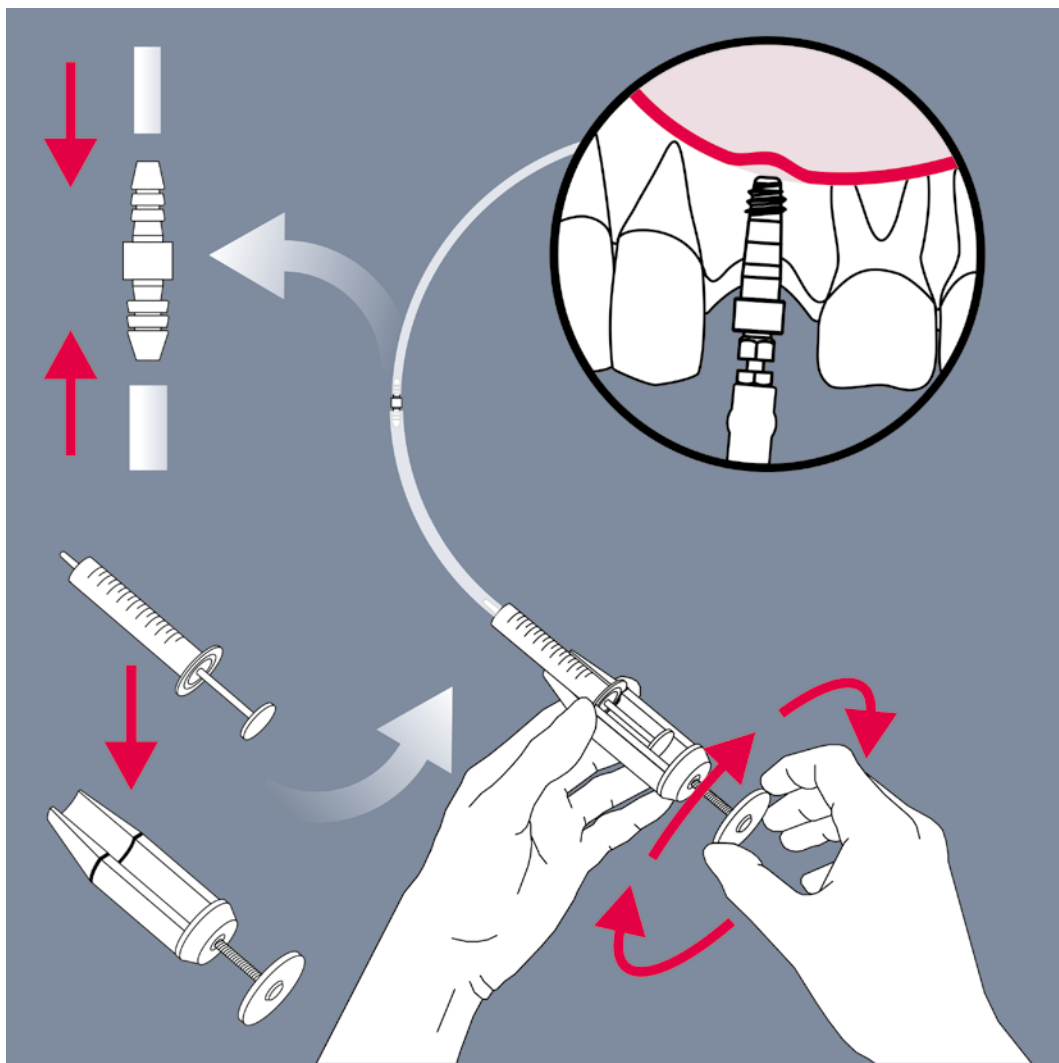
In case the CS1 elevator doesn't guarantee a watertight system due to an inadequate mineralized bone (D3, D4) or an implant site overpreparation, the CS2 elevator will be the solution!

mectron

medical technology

# ••••• SINUS PHYSIOLIFT® II CONTROLS PRESSURE IN THE SINUS CAVITY!

- Elevation of the sinus membrane with micrometric precision by means of hydrodynamic pressure
- Watertight sinus elevators CS1 or CS2 for hydrodynamic sinus lift
- Atraumatic technique not requiring the use of hammer and osteotome
- Implant site preparation using PIEZOSURGERY® – the new insert P2-3 SP allows to remove the sinus basal cortex with minimal risk of penetrating into sinus cavity due to its conical shape
- Multiple implant placement can be performed
- A flapless procedure can be performed in some cases

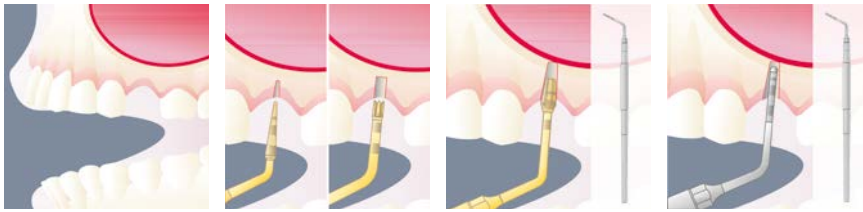


After preparation of the site with PIEZOSURGERY®, the CS1 or CS2 elevator is introduced, and the tube connected to a syringe containing 2 ml of physiological saline solution is then inserted in the CS1 or CS2. With the SINUS PHYSIOLIFT® II protocol, it is possible to elevate the Schneiderian membrane safely, controlling the pressure of the liquid by means of the attached Physiolifter device.

mectron

medical technology

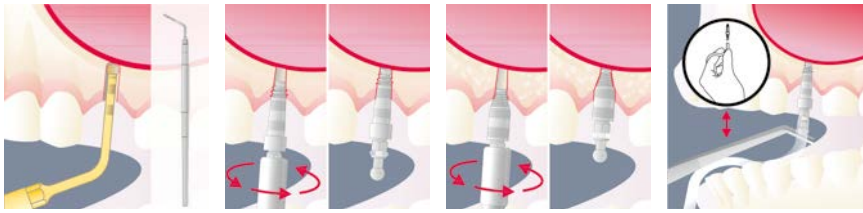
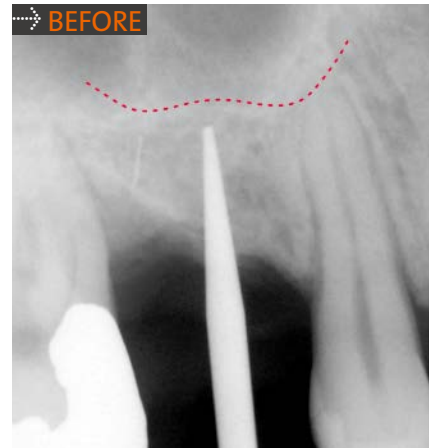
## SINGLE IMPLANT SINUS LIFT



1 Incision

2 Preparation for inserting the elevator

3 Basal cortex erosion

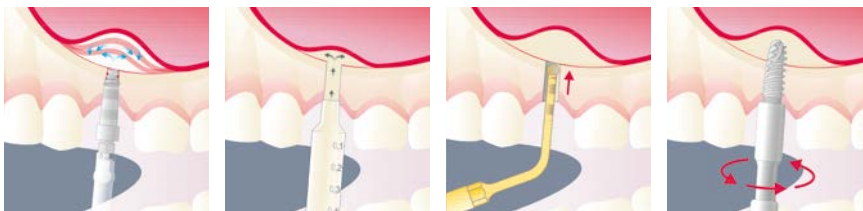
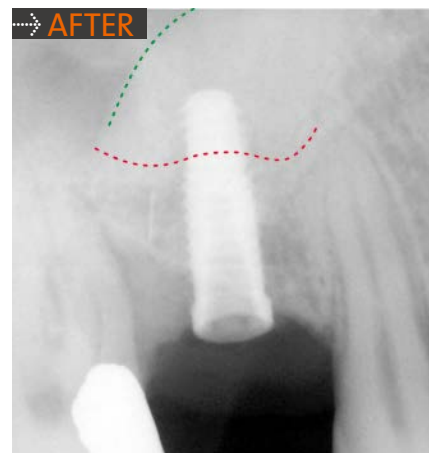


3A Option to the sinus basal cortex erosion

4 Insertion of the CS1 elevator

4A Optional: insertion of the CS2 elevator

5 Attachment of Physiolifter



6 Elevation of the Schneiderian membrane

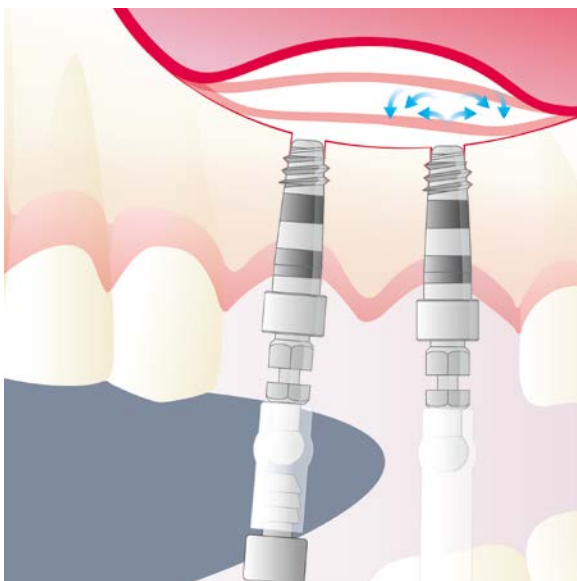
7 The actual lift

8 Compacting the graft material

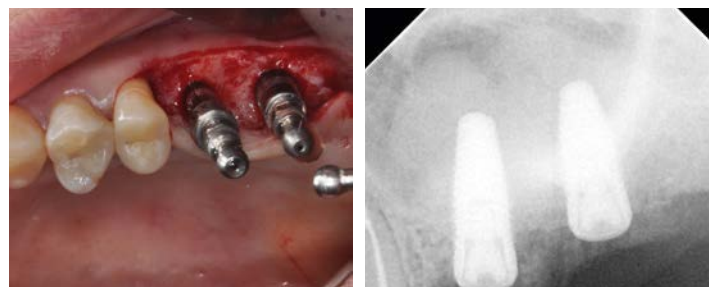
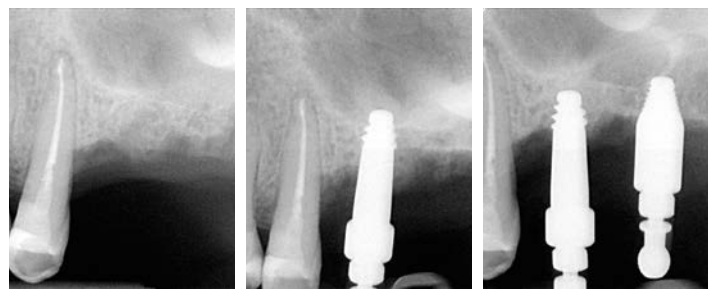
9 Implant placement

## DR. ROSARIO SENTINERI TECHNIQUE

### MULTIPLE IMPLANT SINUS LIFT

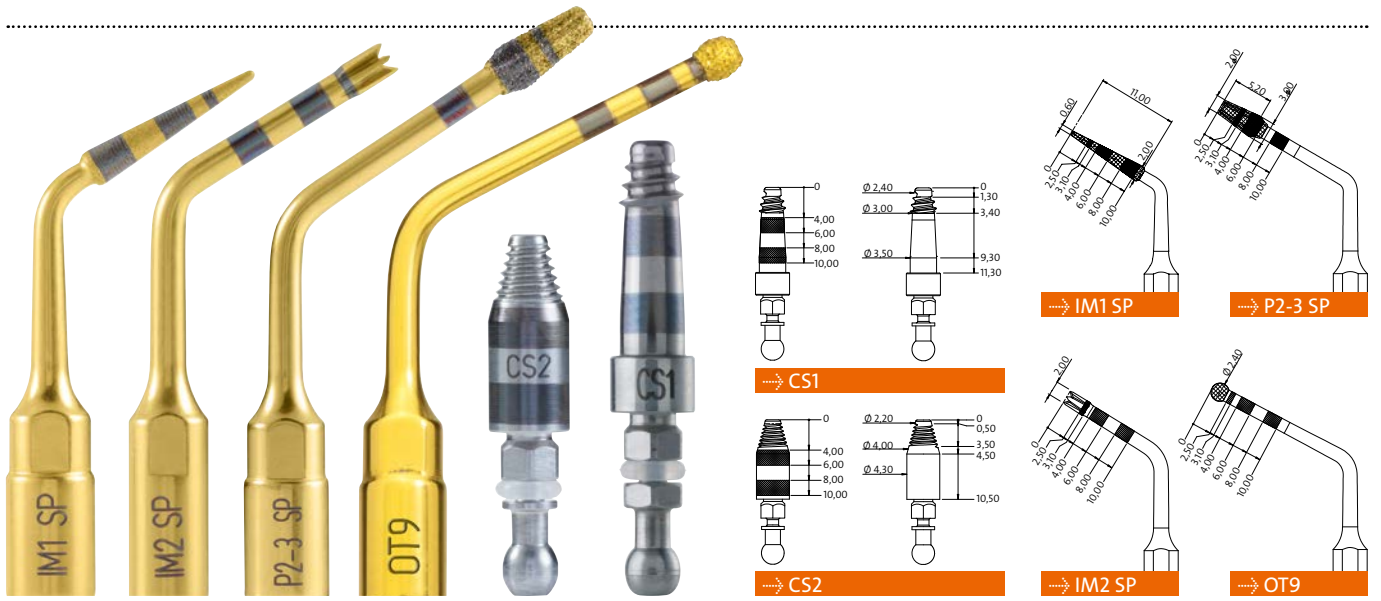


Insertion of the second CS1 or CS2 elevator



Implant placement

# MECTRON SINUS PHYSIOLIFT® II KITS



## SINUS PHYSIOLIFT® II KIT PRO

- Consisting of:
- PIEZOSURGERY® inserts: IM1 SP, IM2 SP, P2-3 SP, OT9
  - Alignment pins: PIN IM1, PIN 2-2.4
  - Crestal sinus elevators 2 x CS1 and 2 x CS2
  - Pressure control system: Physiolifter
  - Ball shaped probe PROBE SP
  - Micromotor and ratchet adapters: ADM10, ADR10
  - Ratchet
  - 3 silicone tubes with tube-tube connector
  - 2 complete sealed tubes
  - 3 sterile disposable syringes
  - 3 insert trays
  - Clinical Protocol and DVD

## SINUS PHYSIOLIFT® II KIT BASIC

- Consisting of:
- Crestal sinus elevators 2 x CS1 and 2 x CS2
  - Pressure control system: Physiolifter
  - Ball shaped probe PROBE SP
  - Micromotor and ratchet adapters: ADM10, ADR10
  - Ratchet
  - 3 silicone tubes with tube-tube connector
  - 2 complete sealed tubes
  - 3 sterile disposable syringes
  - 2 insert trays
  - Clinical Protocol and DVD



mectron s.p.a.  
 via Loreto 15/A, 16042 Carasco (Ge), Italia  
 tel +39 0185 35361, fax +39 0185 351374  
 www.mectron.com, mectron@mectron.com